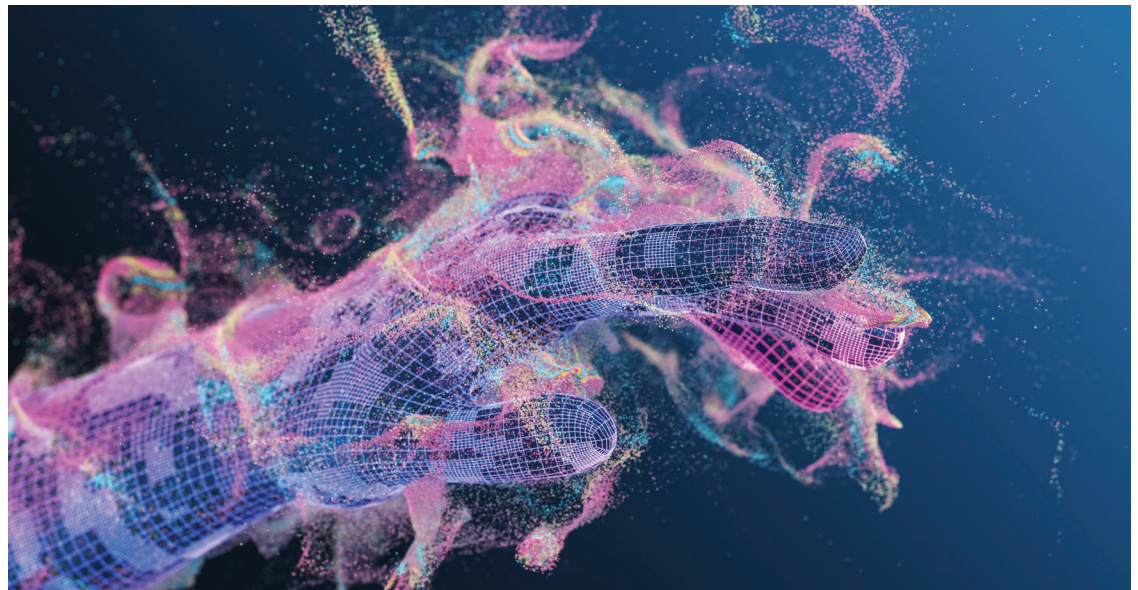


Advancing your drilling insights, revolutionizing your monitoring, and unleashing opportunities

## APPLICATION

The REX® Rules Exchange platform provides real-time alerts from drilling operations. It merges drilling control systems data and electronic drilling recorder (EDR) data. Users can receive alerts related to downhole performance data, equipment health, drilling optimization, and rig operations. Drilling engineers are able to utilize REX® to spend less time actively monitoring operations while consistently being notified of important events or conditions. Drilling Superintendents can be notified of a trip and Drilling Optimization Engineers can be alerted in real-time for disfunction conditions.



## FEATURES

- Real-time alerts at the rig
- Ability to integrate with driller's HMI screen
- Reduce load on cloud servers
- Alerts specific to products filtered by rig
- Unique custom script creation
- Rig REX® UI for diagnosing alert issues
- Leverages REX® UI in PTEN+ Portal
- Integrate additional data sources.
- Real-time centers reduce head count and improve efficiency

## CURRENT SUBSCRIBERS

- Superintendents
- Rigs
- Customers
- Technical Services Personnel
- Engineers

## ALERT CATEGORIES

- Equipment Health
- Drilling Connections
- On-Bottom Drilling
- Tripping
- Sensor Faults

## ACTIVE ALERT DATA

- Drilling Control System
- Electronic Drilling Recorder
- Contract Morning Report